

# Energy Efficiency Rating of HRA Stock (SAP) Apr 2019

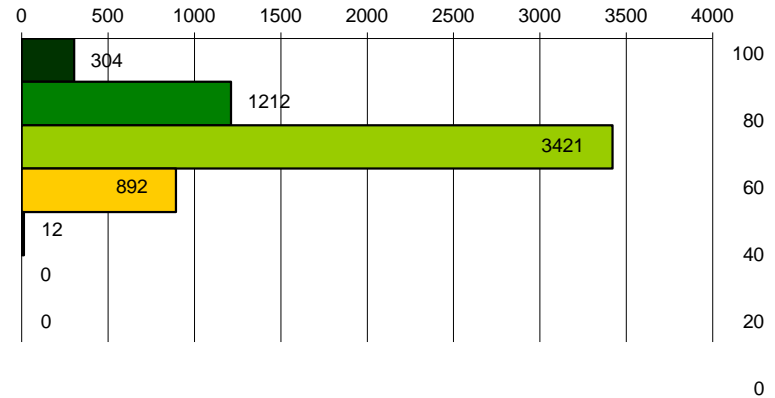
Very energy efficient  
lower running costs

↑

↓

Not energy efficient  
higher running costs

(92-100)	A
(81-91)	B
(69-80)	C
(55-68)	D
(39-54)	E
(21-38)	F
(1-20)	G



Average rating

76.4

No. Properties

	2017/18 outturn	2018/19 outturn
A	305	304
B	1216	1212
C	3436	3421
D	898	892
E	13	12
F	0	0
G	0	0
<b>Total</b>	<b>5868</b>	<b>5841</b>

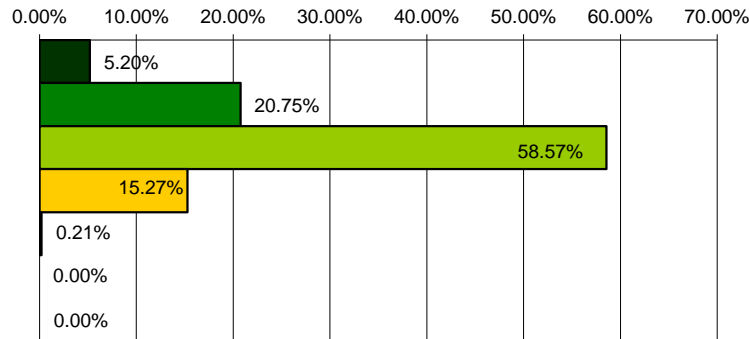
Very energy efficient  
lower running costs

↑

↓

Not energy efficient  
higher running costs

(92-100)	A
(81-91)	B
(69-80)	C
(55-68)	D
(39-54)	E
(21-38)	F
(1-20)	G



% of stock

	2017/18 outturn	2018/19 outturn
A	5.20%	5.20%
B	20.72%	20.75%
C	58.55%	58.57%
D	15.30%	15.27%
E	0.22%	0.21%
F	0.00%	0.00%
G	0.00%	0.00%
<b>Total</b>	<b>100%</b>	<b>100%</b>

This page is intentionally left blank