

Carshalton and Clockhouse Local Committee

COVID-19 Update & next steps

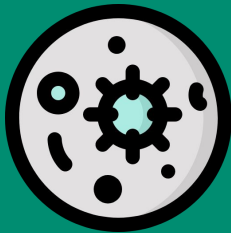
Our Borough Response

Partners in Sutton have been preparing for and responding to COVID-19 since February 2020. The strength of our local partnership has been demonstrated through the enormous efforts to protect our NHS services, support residents and businesses and to shield the most vulnerable in our communities.

The response to the pandemic has shone a light on some of the best qualities of our local community, whilst the impact of the pandemic itself has exposed some of the underlying health inequalities that still persist in Sutton and across the rest of London.

Context

We are now past the peak of the first wave of COVID-19 infections however the impact of the pandemic will continue to be felt for a considerable period of time.



1,691 Sutton residents have tested positive for COVID 19 (as of 21/10)



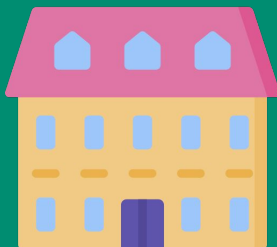
36,945 Tests have been completed in Sutton (as of 21/10)



700 referrals have been made to the voluntary sector via the Community Hub

Our local context

Sutton is unique in comparison to some of our neighbours



There are 79 care homes in Sutton. The most in South West London



We have 7,969 people in our shielded population



Hill House is the new food distribution centre for the borough

Supporting our borough

VULNERABLE PEOPLE

Working with care homes to provide infection prevention and control training, PPE supplies & support

LOCAL ECONOMY

£1.27m
discretionary grant
given to small
sutton businesses

SERVICES

Being flexible and creating new digital solutions to continue essential services like health visiting

The Workforce Response

We have continued to deliver statutory services throughout this period and have put new measures in place to ensure better coordination

- 228 staff redeployed most within the Council, some to work with partners
- 32 health visitors were seconded to the NHS
- Officers providing support to local businesses as retailers open up again

The Community Hub

In response to COVID-19, a Community Hub was set up at Westcroft Leisure Centre to support local people and particularly those who were shielding.



Sutton

70+ Council
redeployees



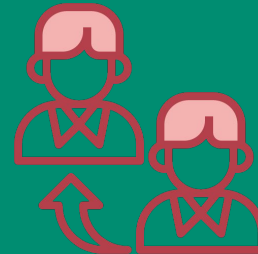
20 Volunteer
packers



90+ Volunteer
drivers



5427 food
parcels



700 referrals
made to the voluntary
sector



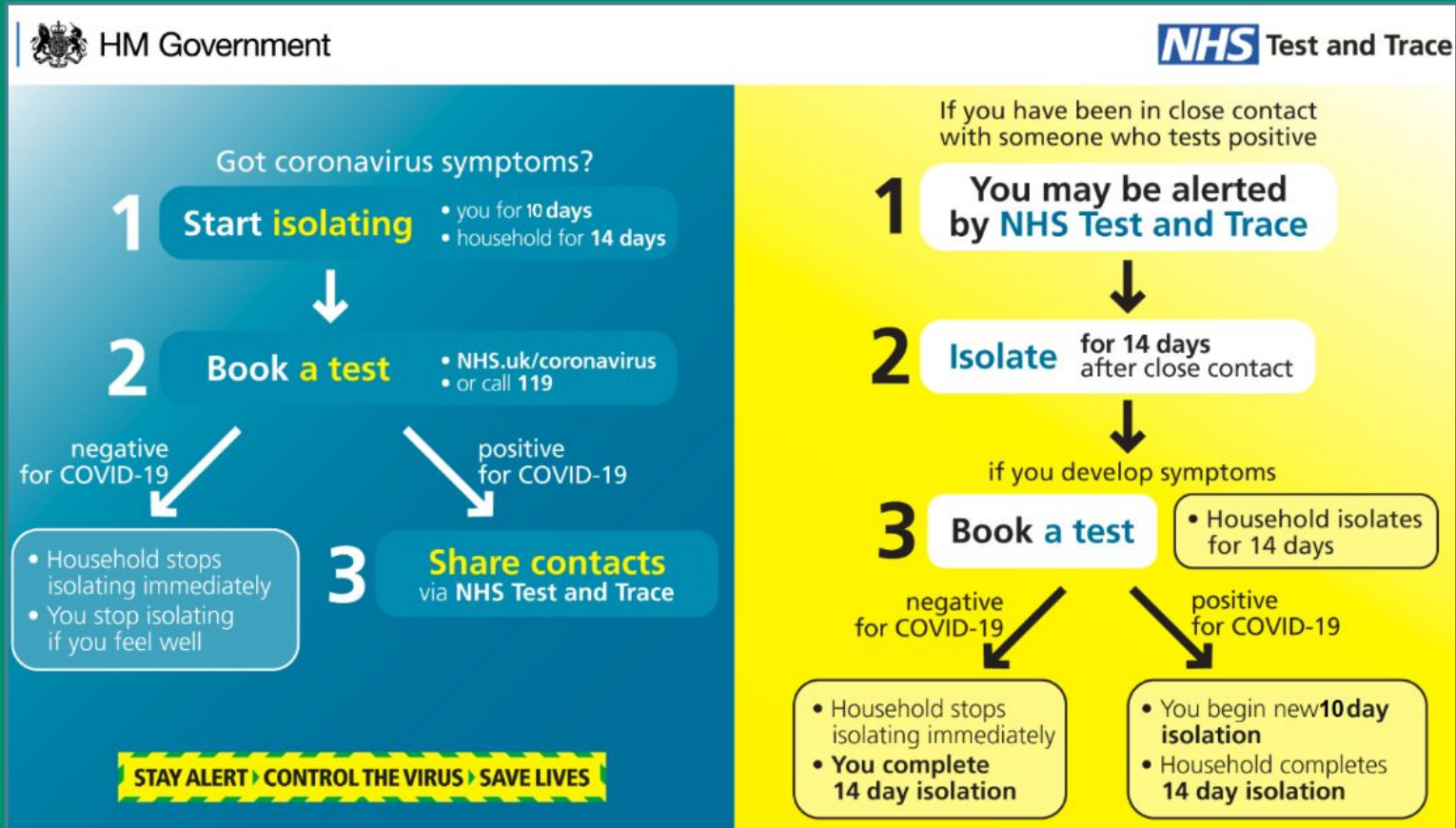
Sutton

Working with our borough

We published our **Local Outbreak Control Plan** in June 2020. The key aims of this document are

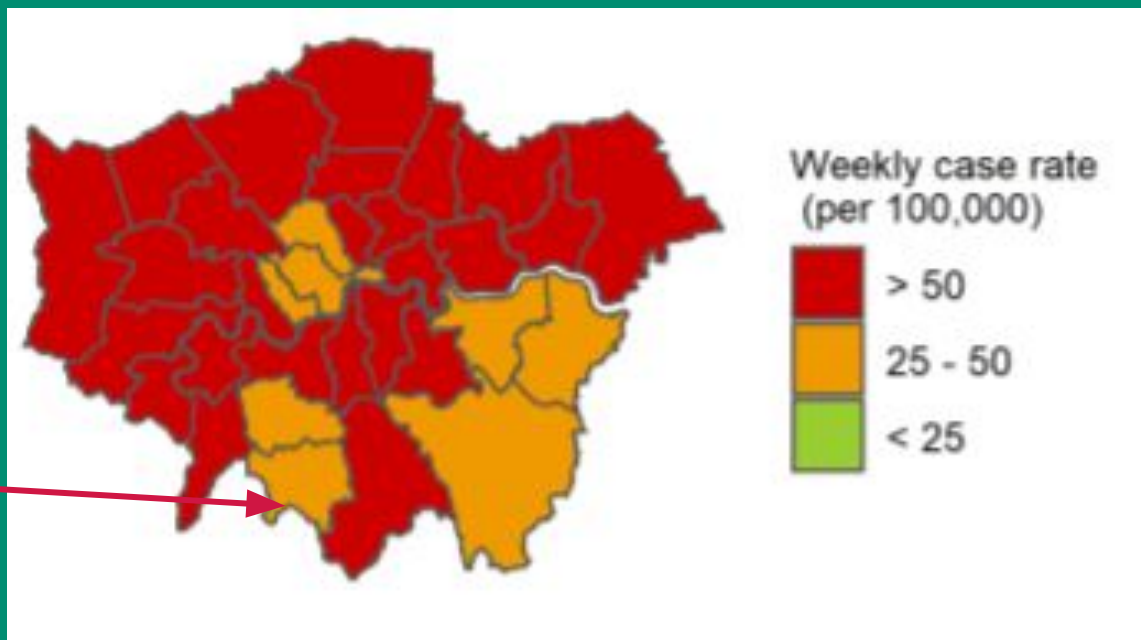
- Supporting individuals with symptoms to self-isolate, get tested and share details with NHS Test & Trace
- Prevent and reduce transmission in our wider community and through targeted communications
- Providing a prompt & coordinated response

What is NHS Test & Trace?



London Context: *add tiers*

Infections in Sutton remain low in comparison to other areas of London, however, we are now starting to seeing signs of a second wave and the government is taking steps to reduce community transmission.



(Sutton)

Case rate for Lower Tier Local Authorities in London 7-day period
September 25 2020 to October 1 2020



Sutton is a COVID alert level: High area



HM Government



**LOCAL COVID
ALERT LEVEL**

HIGH

YOU MUST:

- Not meet people socially anywhere indoors
- Only meet people outdoors in groups of up to six
- Work from home if possible
- Reduce the number of journeys you make

Find all local restrictions and laws at gov.uk/coronavirus

STAY ALERT · CONTROL THE VIRUS · SAVE LIVES



Communications within Sutton

ONLINE

Social media promotion (32K reach)

Website update

21 digital screens in the community

Sutton Scene

PHYSICAL

10 billboards

Bus side adverts

Posters to 940 businesses

Floor stencils

Ad Van

IN THE COMMUNITY

Leaflets delivered to households

Teacher campaign

Community Champion Network

Communications: a renewed focus



1

A new focus on:

Under 30's
BAME communities
People on low incomes

2

Targeted comms for:

Cabbies - addressing
challenges + providing
information on self
isolation

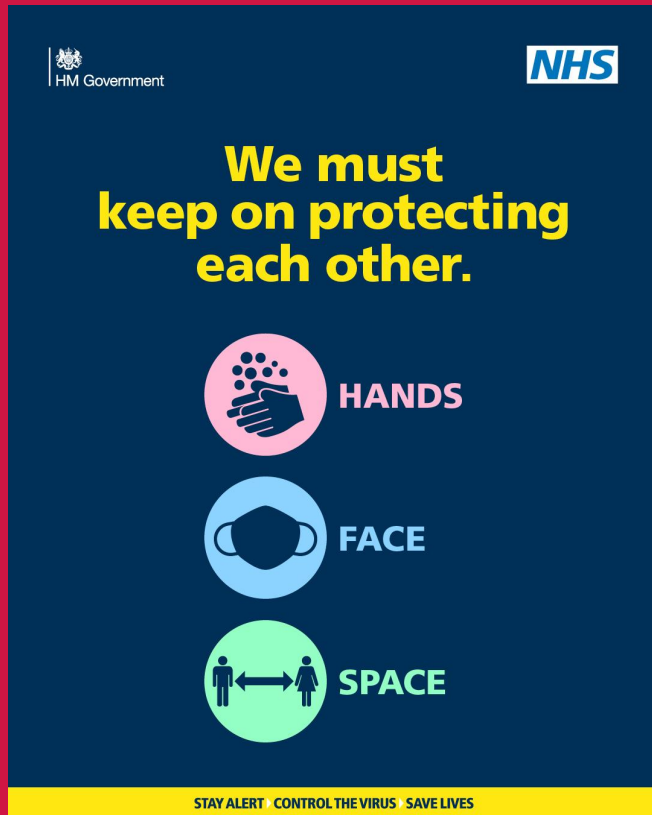
3

Targeted comms for:

BAME communities -
multilingual social
media campaign

Faith group webinars

What happens next?



Organising contact tracing

- NHS Test and Trace will work with local authorities who will need to establish a dedicated team of contact tracers for local areas

Supporting the rule of 6

- Working with businesses to ensure that they implement the new rule of 6 and 10pm curfew

Working with high risk settings

- Working closely with local organisations like schools and care homes in case of local lockdown

How can you #KeepSuttonSafe



1

Continue to follow the Government guidelines on social distancing, handwashing and respiratory hygiene and arrange a COVID test if you get symptoms

2

Participate with NHS Test & Trace when asked and be ready to share contacts if necessary

3

Wear face coverings in indoor public spaces and test if you are feeling unwell

Flu Vaccinations

“Why should I have one?”

Flu occurs every year usually during winter and symptoms can come on very quickly.

The vaccine provides the best protection against the virus that can cause severe illness.

The vaccine will not protect you against coronavirus

“Who is eligible for the NHS funded programme”

- 65's and over. **From Autumn this includes people aged 50 and over**
- Pregnant women
- Those with a long term condition
- Patients on the NHS Shielded list for COVID-19
- A health & care worker employed through a direct payment
- Carers living or working in a residential or nursing home
- A main carer of an older or disabled person
- All children aged 2 to 10 and children in school year 7

Where can you go to get a flu vaccination?

- Speak with your GP
- A pharmacy who is offering the service
- Speak to your midwife if you are pregnant
- Depending on age ; Children can have a vaccination at their school, GP or community clinic

This page is intentionally left blank