

PARKING STRATEGY

GA1b and GA2

Next steps

Parking Strategy for Sutton South, Cheam and Belmont

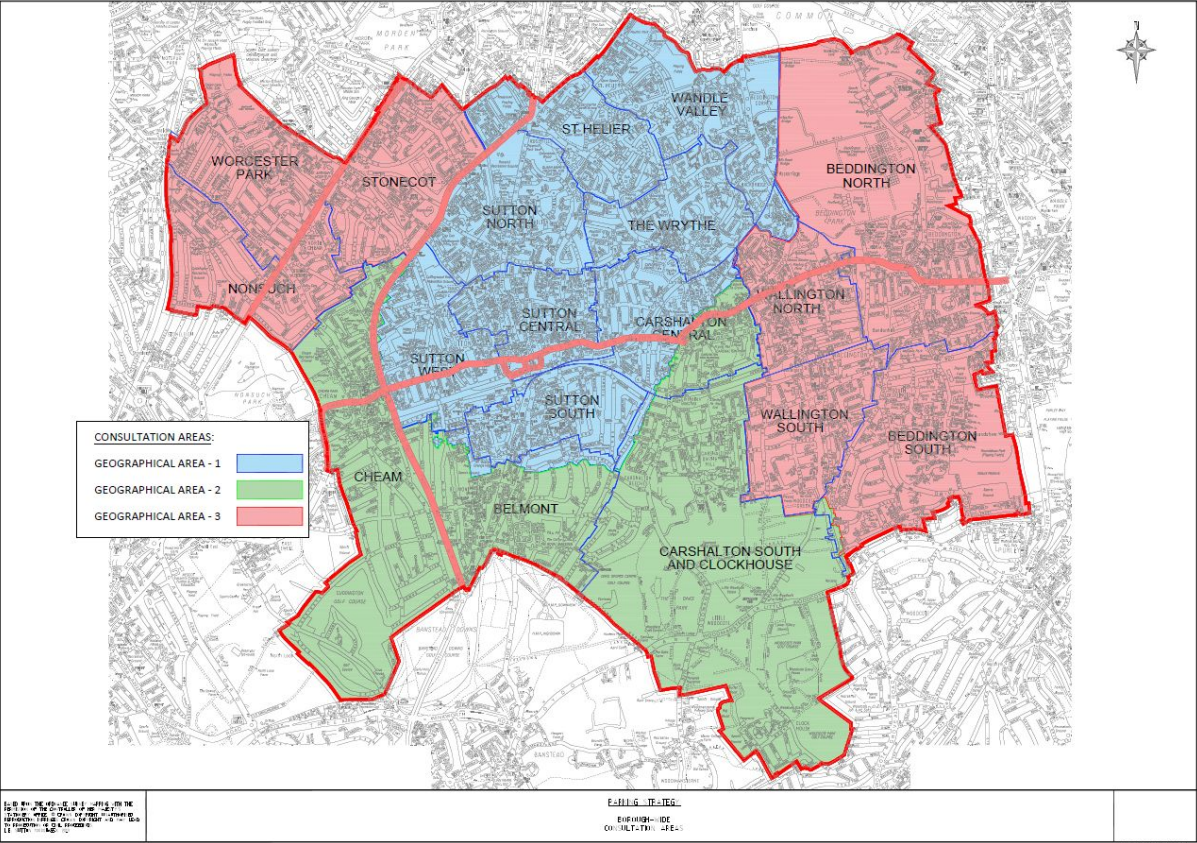
Parking Strategy - Background

GA1b background and next steps

GA2 update and timelines

Questions

Parking Strategy - Geographical Areas



Parking Strategy - Background

The parking strategy was agreed in 2016 with the aim of carrying out a large scale consultation with members of the public to better understand the parking pressures in the borough and to use the information gathered from the public to design schemes to improve parking for the residents and businesses of Sutton.

Parking Strategy - GA1b

The first informal consultation ran during June 2018 where we asked residents to tell us if they had parking issues and if they would support parking restrictions to alleviate any parking pressures.

The data obtained from the first consultation was used to design potential schemes in the areas which showed support and this was used to carry out a second informal consultation during November/December 2018.

Based on feedback from the second informal consultation schemes were then refined and a statutory consultation for the proposals (the legal part) ran for 21 days and closed on 21 November 2019.

Parking Strategy - GA1b - Where we are now?

- In the next 2 weeks contractors will be lining and signing Crossways
- End of November Green CPZ changes and SS PPA to be introduced
- Remaining waiting & loading restrictions introduced before Christmas
- Objection response letters are being sent to residents in the streets where we are introducing the schemes, members have been advised of this in advance
- Permit application letters sent as emails to ward members and posted to the public from 26 October for the following areas:
 - South Sutton PPA
- Officers are checking the work of our contractors where schemes have been installed.

Parking Strategy - GA2 Proposals

Geographical Area 2 schemes

Cheam

- Peaches Close CH PPA
- Existing Cheam free CPZ proposals
- Waiting and loading restrictions, free bays etc

Belmont

- Heath Drive BH2 PPA
- Waiting and loading restrictions, free bays etc

(Note: no schemes proposed in Sutton South as part of GA2)

Parking Strategy - GA2

Current timeline for Geographical Area 2 -

- The next phase of GA2, which is the statutory consultation, is being prepared to go out on 3 December to run until the 4 January
- Key dates:
 - 3 December - Start statutory consultation, ends 4 January 2021
 - Review responses and finalise schemes to advertise in February
 - Provisional scheme go live approximately May/June 2021.

Parking Strategy

Thank You - Any Questions Please?

This page is intentionally left blank